

Standard



The **standard revolving door series GRA** is used in:

- hotels and restaurants
- office and administration buildings
- service stations
- banks

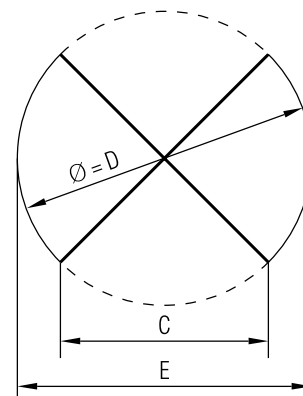
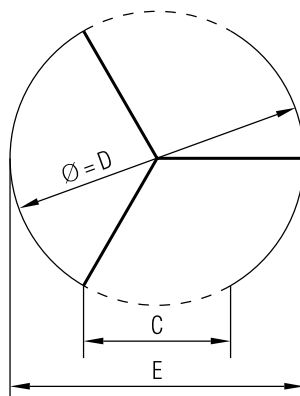
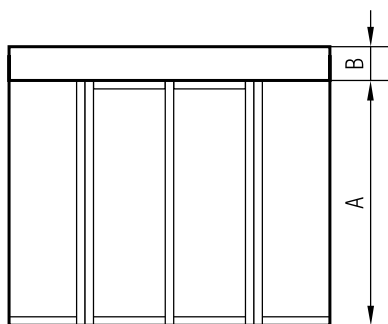


The **standard revolving door series GRA** is characterised by a framed turn stile and by drum walls consisting of an aluminium-glass-construction with slim profiles or thermally insulated smooth panels.

Due to their variable construction and to many options, ATS revolving doors meet individual demands in dimensions and design offering high quality solutions for many building and renovation projects.

Comfortable, unobstructed and safe passage is as important as a reduction of energy costs and the possible uses revolving doors offer to the operator. Dirt, exhaust and traffic noise are kept outside.

In addition to an impressive and individual design, functionality, thermal insulation and noise protection are the features of building entrances realised with ATS revolving door systems.



D*	A*	B*	C 3 door leaves	C 4 door leaves	E
1800	2100 – 3000	175 – 800	~ 830	~ 1220	1860
1900	2100 – 3000	175 – 800	~ 875	~ 1290	1960
2000	2100 – 3000	175 – 800	~ 920	~ 1350	2060
2100	2100 – 3000	175 – 800	~ 965	~ 1420	2160
2200	2100 – 3000	175 – 800	~ 1010	~ 1490	2260
2300	2100 – 3000	175 – 800	~ 1060	~ 1560	2360
2400	2100 – 3000	175 – 800	~ 1105	~ 1620	2460
2500	2100 – 3000	175 – 800	~ 1150	~ 1690	2560
2600	2100 – 3000	175 – 800	~ 1195	~ 1760	2660
2700	2100 – 3000	175 – 800	~ 1240	~ 1820	2760
2800	2100 – 3000	175 – 800	~ 1285	~ 1890	2860
2900	2100 – 3000	175 – 800	~ 1330	~ 1960	2960
3000	2100 – 3000	175 – 800	~ 1375	~ 2030	3060
3100	2100 – 3000	175 – 800	~ 1420	~ 2090	3160
3200	2100 – 3000	175 – 800	~ 1465	~ 2160	3260
3300	2100 – 3000	175 – 800	~ 1510	~ 2230	3360
3400	2100 – 3000	175 – 800	~ 1555	~ 2290	3460
3500	2100 – 3000	175 – 800	~ 1600	~ 2360	3560
3600	2100 – 3000	175 – 800	~ 1645	~ 2430	3660

* Special dimensions on request

Turnstile

- 3 or 4 rigid leaves with 10 mm clear toughened glass
- folding mechanism for summer position possible

Drum Walls

- curved 9 mm clear laminated glass
- curved, smooth-surfaced panel (with 30 mm thermal insulation)

Drive

- manual
- manual with automatic positioning
- semi-automatic (push and go)
- fully automatic

In the case of an automatic drive, the canopy fascia profile must have a height of 175 mm at the minimum.

Night locking

- espagnolette locks in the door leaves

- electromechanical locking unit for the turn stile
- manual or automatic night sliding doors running outside

Surfaces

- RAL finish
- silver anodised
- colour anodised
- stainless steel 240 grit satin polished
- bright polished stainless steel

Options

- 35 Watt halogen spot lights to be installed in the aluminium ceiling
- stainless steel floor ring V2A
- vertical or horizontal handles of stainless steel
- EMCO mat, coir matting
- roof outside the building waterproof

Further options on request