

## Large-capacity



The large-capacity revolving door series GGR/GGV is used in:

- shopping centres
- air ports
- furniture stores
- hospitals
- health and rehabilitation clinics
- hotels



The large-capacity revolving door series GGR/GGV is the elegant and energy-saving solution when it comes to managing large quantities of people.

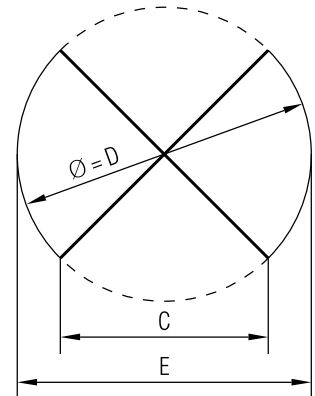
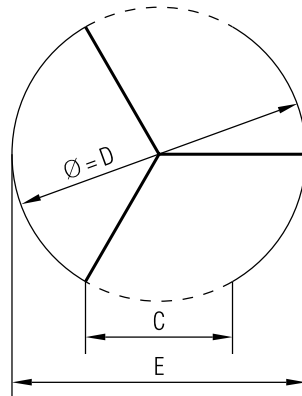
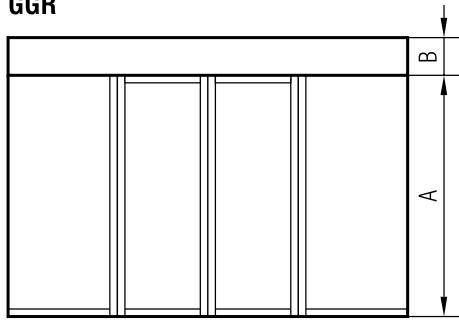
This door combines elegant design and high functionality in an ideal way. The passage with shopping trolleys, baby carriages or wheelchairs is possible without any problem.

Whether with or without central display case, night locking or illumination – this revolving door offers a large variety of design options.

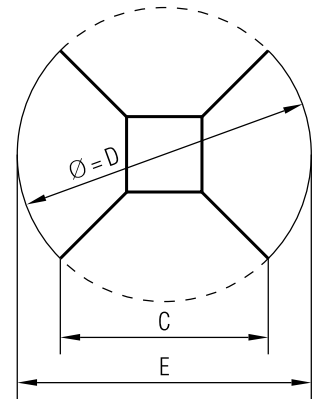
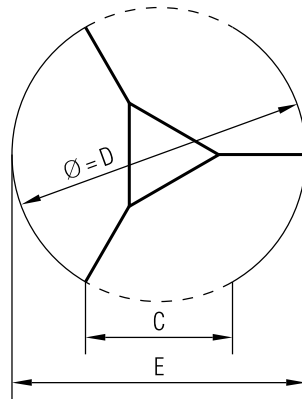
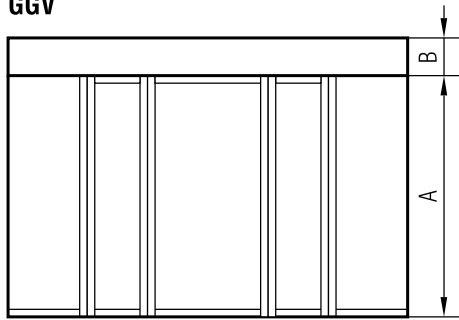
As a matter of course, maximum safety is guaranteed by fixed sensors and sensors moving with the turn stile.

The GGR/GGV series is tested and licensed for use with emergency and escape routes.

## GGR



## GGV



D*	A*	B*	C 3 door leaves	C 4 door leaves	E
3600	2100 – 2500	500 – 800	~ 1690	~ 2455	3720
4200	2100 – 2500	500 – 800	~ 1972	~ 2864	4320
4800	2100 – 2500	500 – 800	~ 2253	~ 3274	4920
5400	2100 – 2500	500 – 800	~ 2535	~ 3683	5520
6000	2100 – 2500	500 – 800	~ 2817	~ 4092	6120
6200	2100 – 2500	500 – 800	~ 2911	~ 4228	6320

\* Special dimensions on request

### Turnstile

- 3 or 4 pivoted door leaves with 6 mm clear toughened glass

### Drum Walls

- curved 9 mm clear laminated glass
- curved, smooth-surfaced panel (with 30 mm thermal insulation)

### Drive

- fully automatic via radar including safeguard for primary and secondary closing edges, sensors and contact strips for heel protection, storm lock

### Night locking

- espagnolette locks in the door leaves
- electromechanical locking unit for the turn stile

- manual or automatic night sliding doors running outside

### Surfaces

- RAL finish
- silver anodised
- colour anodised
- stainless steel 240 grit satin polished
- bright polished stainless steel

### Options

- 35 Watt halogen spot lights to be installed in the aluminium ceiling
- stainless steel floor ring V2A
- push button for disabled persons
- EMCO mat, coir matting
- roof outside the building waterproof

Further options on request