

## TE 240 3D

for unrebated and rebated flush residential doors

### hinge

#### Technical details

load capacity	40,0 kg
overall length	155,0 mm
width (door)	18,0 mm
width (frame)	21,0 mm
cutter diameter	16,0 mm
opening angle	180° degree

#### descriptive text

SIMONSWERK TECTUS hinge TE 240 3D. Completely concealed for unrebated and rebated flush doors with timber, steel and aluminium frames. CE-certified, load capacity up to 40 kg, opening angle up to 180°, overall length 155 mm, right hand and left hand applicable, maintenance-free slide bearings, three-dimensionally adjustable: side +/- 3,0 mm, height +/- 3,0 mm, compression +/- 1,5 mm. Finish...

#### Note

The load capacity mentioned above refers to the use of 2 hinges per door leaf (1 x 2 m).

Finger protection on the hinge side due to a small gap between door and frame.

#### Product features

- completely concealed hinge system
- for timber, steel or aluminium frames
- for unrebated and rebated flush residential doors
- maintenance-free slide bearings
- with comfortable 3D adjustment (side +/- 3,0 mm, height +/- 3,0 mm, compression +/- 1,5 mm)

#### Quality marks



#### Combination

receiver	TE 240 3D FZ/1 TE 240 3D SZ
----------	--------------------------------

#### installation tools

universal milling frame	
template 5 250691 6	frame
template 5 250692 6	door



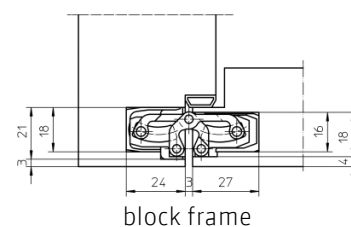
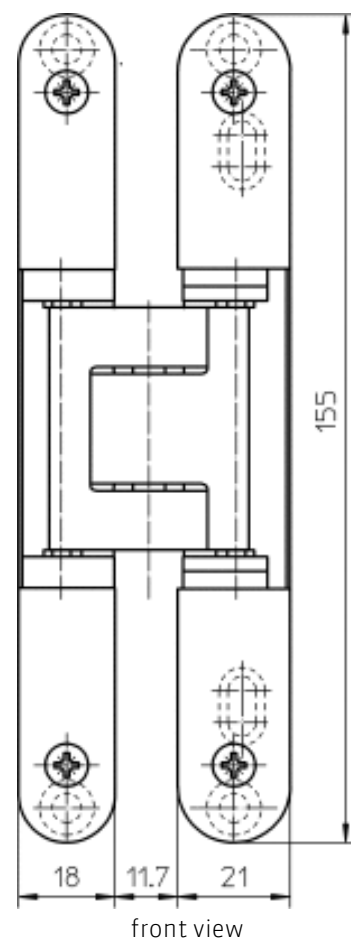
## TE 240 3D

for unrebated and rebated flush residential doors

### hinge

**Items** (DIN reference: DIN right and left hand)

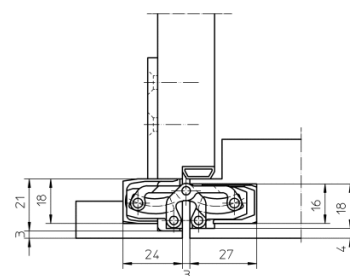
<b>finishes(es)</b>	polished brassed 030
<b>packing unit</b>	pack of 2
<b>item number</b>	5 400594 0 03002
<b>finishes(es)</b>	polished nickelled 038
<b>packing unit</b>	pack of 2
<b>item number</b>	5 400594 0 03802
<b>finishes(es)</b>	powder-coated 079
<b>packing unit</b>	EUR pallet
<b>item number</b>	5 400594 0 07975
<b>finishes(es)</b>	F1-coloured 124
<b>packing unit</b>	pack of 2
<b>item number</b>	5 400594 0 12402
<b>finishes(es)</b>	F2-coloured 125
<b>packing unit</b>	pack of 2
<b>item number</b>	5 400594 0 12502
<b>finishes(es)</b>	stainless steel look 126
<b>packing unit</b>	pack of 2
<b>item number</b>	5 400594 0 12602



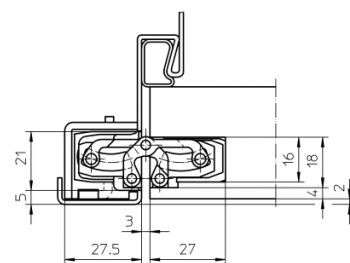
## TE 240 3D

for unrebbated and rebated flush residential doors

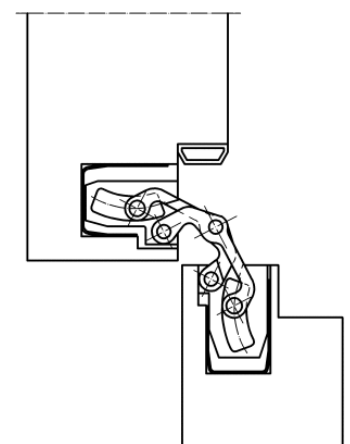
### hinge



casing frame



steel frame

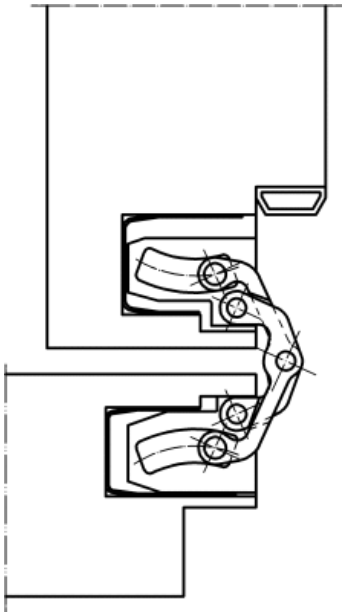


block frame 90°

TE 240 3D

for unrebated and rebated flush residential doors

hinge



block frame 180°