

SIMONSWERK VARIANT® VX

VX 7728/120

for rebated flush heavy-duty doors

hinge

Technical details

load capacity	100,0 kg
knuckle length	120,0 mm
knuckle diameter	20,0 mm
material thickness	3,5 mm
cutter diameter	24,0 mm
screws	5,0x50,0 mm

descriptive text

SIMONSWERK VARIANT heavy duty hinge VX 7728/120 for rebated flush doors with timber, steel and aluminium frames with three-dimensionally adjustable SIMONSWERK receivers VARIANT VX. CE-certified, load capacity 100 kg, knuckle length 120 mm, knuckle diameter 20 mm, right hand and left hand applicable. Internal torsion-proof screw pin, concealed, maintenance-free, generously dimensioned axial-radial slide bearings. Finish...

Note

The load capacity mentioned above refers to the use of 2 hinges per door leaf (1 x 2 m).

A reinforcing dowel 12x50 mm per hinge is recommended when the door is subject to heavy usage.

Also available with security pin (MSTS).

Product features

- for rebated flush heavy-duty doors
- for timber, steel or aluminium frames
- for 3D adjustable VARIANT VX receivers
- internal torsion-proof screw pin
- concealed, maintenance-free axial-radial slide bearings

Functional areas

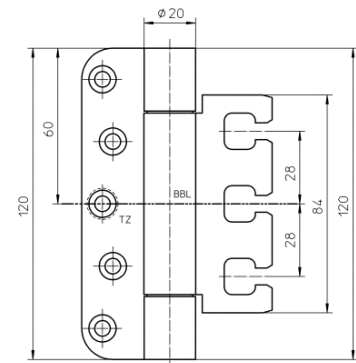
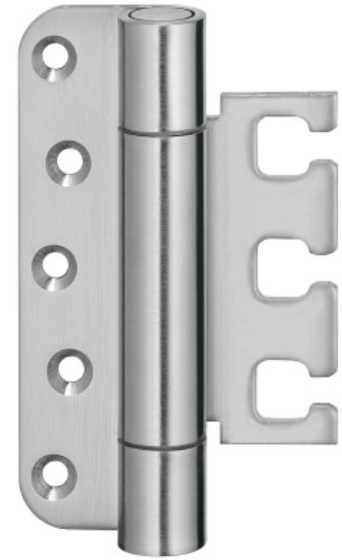
fire resistance, smoke resistance

Quality marks

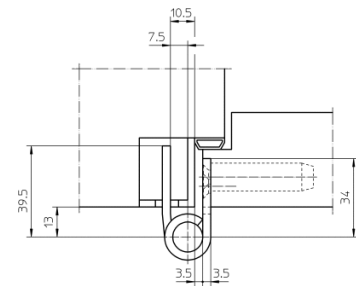


Combination

receiver	VX 2501 3D VX 7501 3D VX 2502 3D VX 7502 3D
----------	--



front view



block frame

SIMONSWERK

VARIANT® VX

VX 7728/120

for rebated flush heavy-duty doors

hinge

Combination

VX 7506 3D
 VX 2505 3D
 VX 7505 3D
 VX 7611 3D
 VX 7612 3D
 VX 7521 3D

installation tools

universal milling frame
 template 5 250562 5

Items (DIN reference: DIN right and left hand)

finishes(es)	galvanised 010
packing unit	pack of 2
item number	5 040705 0 01002
finishes(es)	satin nickelled/F2 018
packing unit	pack of 2
item number	5 040705 0 01802
finishes(es)	satin chromed/F1 037
packing unit	pack of 2
item number	5 040705 0 03702
finishes(es)	satin brushed stainless steel 040
packing unit	pack of 2
item number	5 040705 0 04002