

SIMONSWERK VARIANT® VN

VN 1939/100

for rebated heavy-duty doors with block frames

hinge

Technical details

load capacity	100,0 kg
knuckle length	95,0 mm
knuckle diameter	20,0 mm
material thickness	3,5 mm
cutter diameter	24,0 mm
screws	5,0 x 50,0 mm
pin diameter	10,0 mm

descriptive text

SIMONSWERK VARIANT heavy duty hinge VN 1939/100 for rebated doors with block frames. CE-certified, load capacity 100 kg, knuckle length 95 mm, knuckle diameter 20 mm, right hand and left hand applicable. Internal torsion-proof screw pin, concealed, maintenance-free, generously dimensioned axial-radial slide bearings. Finish...

Note

The load capacity mentioned above refers to the use of 2 hinges per door leaf (1 x 2 m).

Also available with security pin (MSTS).

The hinge system can also be used on blind frames.

Product features

- for rebated heavy-duty doors
- for block frame
- internal torsion-proof screw pin
- concealed, maintenance-free axial-radial slide bearings

Functional areas

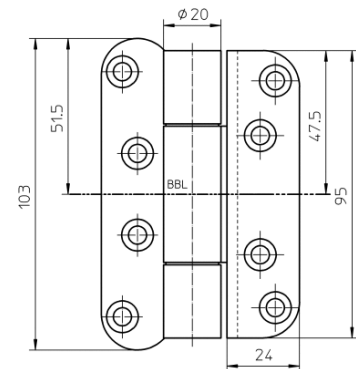
fire resistance, smoke resistance

Quality marks

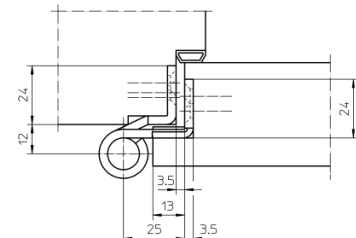


installation tools

universal milling frame	
template 5 250563 5	door
template 5 250579 6	frame



front view



block frame

SIMONSWERK

VARIANT® VN

VN 1939/100

for rebated heavy-duty doors with block frames

hinge

Items (DIN reference: DIN right and left hand)

finish(es)	galvanised 010
packing unit	pack of 10
item number	5 030641 0 01006
finish(es)	satin nickelled/F2 018
packing unit	pack of 10
item number	5 030641 0 01806
finish(es)	polished brassed 030
packing unit	pack of 10
item number	5 030641 0 03006
finish(es)	satin brushed stainless steel 040
packing unit	pack of 10
item number	5 030641 0 04006
finish(es)	powder-coated 079
packing unit	EUR-pallet
item number	5 030641 0 07975