

SIMONSWERK VARIANT® VN

VN 1939/160

for rebated heavy-duty doors with block frames

hinge

Technical details

load capacity	160,0 kg
knuckle length	160,0 mm
knuckle diameter	22,5 mm
material thickness	3,5 mm
cutter diameter	24,0 mm
screws	5,0 x 50,0 mm
pin diameter	10,0 mm

descriptive text

SIMONSWERK VARIANT heavy duty hinge VN 1939/160 for rebated doors with block frames. CE-certified, load capacity 160 kg, knuckle length 160 mm, knuckle diameter 22,5 mm, right hand and left hand applicable. Internal torsion-proof screw pin, concealed, maintenance-free, generously dimensioned axial-radial slide bearings. Finish...

Note

The load capacity mentioned above refers to the use of 2 hinges per door leaf (1 x 2 m).

Also available with security pin (MSTS).

A reinforcing dowel 12x50 mm per hinge leaf is recommended when the door is subject to heavy usage.

The hinge system can also be used on blind frames.

Product features

- for rebated heavy-duty doors
- for block frame
- internal torsion-proof screw pin
- concealed, maintenance-free axial-radial slide bearings

Functional areas

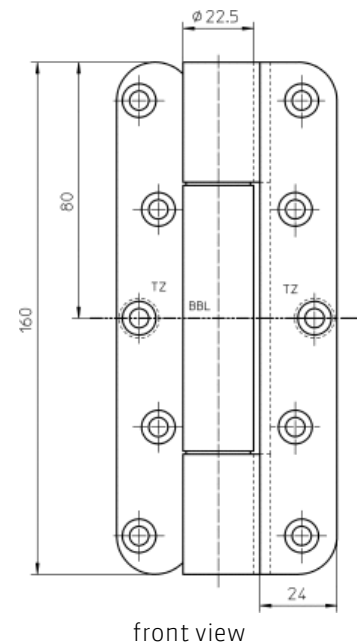
fire resistance, smoke resistance

Quality marks



installation tools

universal milling frame	
template 5 250560 5	door
template 5 250559 6	frame



SIMONSWERK

VARIANT® VN

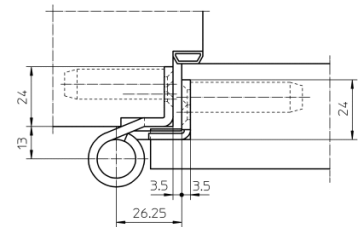
VN 1939/160

for rebated heavy-duty doors with block frames

hinge

Items (DIN reference: DIN right and left hand)

finish(es)	galvanised 010
packing unit	pack of 2
item number	5 050501 0 01002
finish(es)	satin nickelled/F2 018
packing unit	pack of 2
item number	5 050501 0 01802
finish(es)	polished brassed 030
packing unit	pack of 2
item number	5 050501 0 03002
finish(es)	satin chromed/F1 037
packing unit	pack of 2
item number	5 050501 0 03702
finish(es)	satin brushed stainless steel 040
packing unit	pack of 2
item number	5 050501 0 04002
finish(es)	powder-coated 079
packing unit	EUR-pallet
item number	5 050501 0 07975



block frame