

SIMONSWERK VARIANT® VN

VN 2927/120 Compact

for unrebated heavy-duty doors with slimline block frames

hinge

Technical details

load capacity	120,0 kg
knuckle length	120,0 mm
knuckle diameter	20,0 mm
material thickness	3,5 mm
cutter diameter	24,0 mm
screws	5,0 x 50,0 mm
pin diameter	10,0 mm

descriptive text

SIMONSWERK VARIANT heavy duty hinge VN 2927/120 Compact with three-dimensionally adjustable receiver positioned in the door leaf for unrebated doors with block frames. Load capacity 120 kg, knuckle length 120 mm, knuckle diameter 20 mm, right hand and left hand applicable. Internal torsion-proof screw pin, concealed, maintenance-free, generously dimensioned axial-radial slide bearings. Finish...

Note

The load capacity mentioned above refers to the use of 2 hinges per door leaf (1 x 2 m).

Also available with security pin (MSTS).

A reinforcing dowel 12x50 mm per hinge is recommended when the door is subject to heavy usage.

The hinge system can also be used on blind frames.

Product features

- for unrebated heavy-duty doors
- for block frame
- with receiver in the door leaf
- continuously 3D adjustable (side +/- 3,0 mm, height +/- 3,0 mm, compression +/- 1,0 mm)
- internal torsion-proof screw pin
- concealed, maintenance-free axial-radial slide bearings

Functional areas

fire resistance, smoke resistance

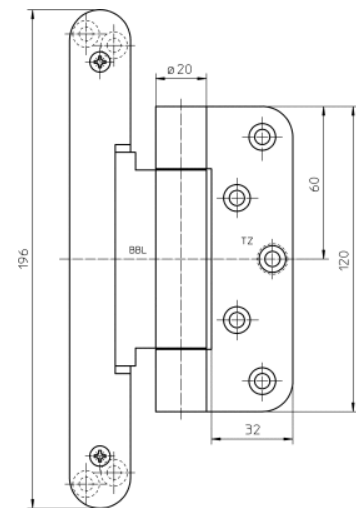
Combination

receiver VN 2900/120

installation tools

universal milling frame

template 5 250354 5 frame



front view

SIMONSWERK VARIANT® VN

VN 2927/120 Compact

for unrebated heavy-duty doors with slimline block frames

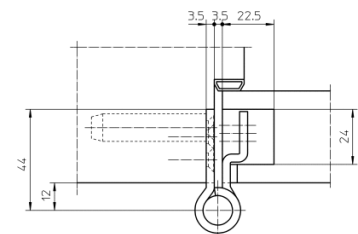
hinge

installation tools

template 5 250697 5	door - step 1
template 5 250698 5	door - step 2
template 5 250699 5	door - step 3

Items (DIN reference: DIN right and left hand)

finish(es)	satin chromed/F1 037
packing unit	pack of 2
item number	5 040770 0 03702
finish(es)	satin brushed stainless steel 040
packing unit	pack of 2
item number	5 040770 0 04002



block frame