

SIMONSWERK VARIANT® VN

VN 2927/160 Compact Planum

with filgree knuckle for unrebated heavy-duty doors with slimline block frames

hinge

Technical details

load capacity	160,0 kg
knuckle length	160,0 mm
knuckle diameter	15,0 mm
material thickness	3,0 mm
cutter diameter	24,0 mm
screws	5,0 x 50,0 mm

descriptive text

SIMONSWERK VARIANT heavy duty hinge VN 2927/160 Compact Planum with reduced, filgree knuckle and three-dimensionally adjustable receiver positioned in the door leaf for unrebated doors with block frames. Load capacity 160 kg, knuckle length 160 mm, knuckle diameter 15 mm, right hand and left hand applicable. Internal fixed screw pin, concealed, maintenance-free, generously dimensioned axial-radial slide bearings. Finish...

Note

The load capacity mentioned above refers to the use of 2 hinges per door leaf (1 x 2 m).

A reinforcing dowel 12x50 mm per hinge is recommended when the door is subject to heavy usage.

The hinge system can also be used on blind frames.

Adapted for the application on doors within the high-class sector the slim, diameter-reduced hinge knuckle is ideal for slimline, recessed frame facings

Product features

- for unrebated heavy-duty doors
- for block frame
- with receiver in the door leaf
- continuously 3D adjustable (side +/- 3,0 mm, height +/- 3,0 mm, compression +/- 1,0 mm)
- internal torsion-proof screw pin
- concealed, maintenance -free axial-radial slide bearings

Functional areas

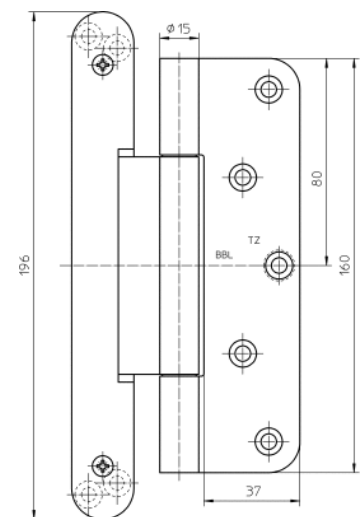
fire resistance, smoke resistance

Combination

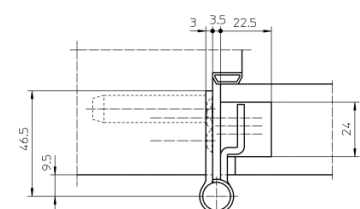
receiver VN 2900/160

installation tools

universal milling frame



front view



SIMONSWERK
VARIANT® VN

VN 2927/160 Compact Planum

with filigree knuckle for unrebated heavy-duty doors with slimline block frames

hinge	
installation tools	
template 5 250353 5	frame
template 5 250697 5	door - step 1
template 5 250698 5	door - step 2
template 5 250699 5	door - step 3

block frame

Items (DIN reference: DIN right and left hand)	
finish(es)	satin chromed/F1 037
packing unit	pack of 2
item number	5 051602 0 03702
finish(es)	satin brushed stainless steel 040
packing unit	pack of 2
item number	5 051602 0 04002

While every due care has been taken, we cannot be held responsible for errors, omissions or defects.
We kindly ask for your understanding.