

# SIMONSWERK

## VARIANT® VN

### VN 5959/160

for rebated flush heavy-duty doors with block frames

#### hinge

#### Technical details

load capacity	120,0 kg
knuckle length	160,0 mm
knuckle diameter	22,5 mm
material thickness	3,5 mm
cutter diameter	24,0 mm
screws	5,0 x 50,0 mm
pin diameter	10,0 mm

#### descriptive text

SIMONSWERK VARIANT heavy duty hinge VN 5959/160 for rebated flush doors with block frames. CE-certified, load capacity 120 kg, knuckle length 160 mm, knuckle diameter 22,5 mm, right hand and left hand applicable. Internal torsion-proof screw pin, concealed, maintenance-free, generously dimensioned axial-radial slide bearings. Finish...

#### Note

The load capacity mentioned above refers to the use of 2 hinges per door leaf (1 x 2 m).

Also available with security pin (MSTS).

A reinforcing dowel 12x50 mm per hinge leaf is recommended when the door is subject to heavy usage.

The hinge system can also be used on blind frames.

#### Product features

- for rebated flush heavy-duty doors
- for block frame
- internal torsion-proof screw pin
- concealed, maintenance-free axial-radial slide bearings

#### Functional areas

fire resistance, smoke resistance

#### Quality marks



#### installation tools

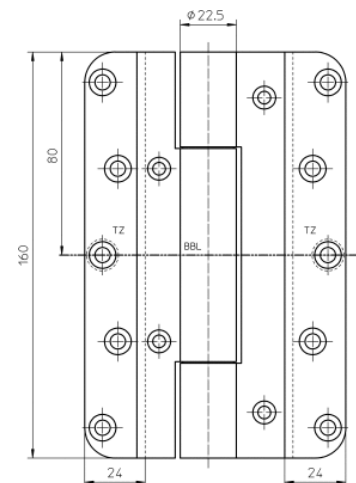
universal milling frame

template 5 250577 6

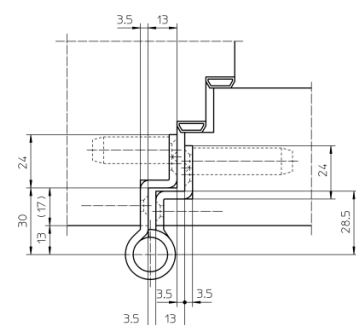
template 5 250578 6

door

frame



front view



block frame

**SIMONSWERK**  
VARIANT® VN

**VN 5959/160**  
for rebated flush heavy-duty doors with block frames

hinge	
-------	--

<b>Items</b> (DIN reference: DIN right and left hand)	
<b>finish(es)</b>	satin nickelled/F2 018
<b>packing unit</b>	pack of 2
<b>item number</b>	5 050596 0 01802
<b>finish(es)</b>	satin brushed stainless steel 040
<b>packing unit</b>	pack of 2
<b>item number</b>	5 050596 0 04002

While every due care has been taken, we cannot be held responsible for errors, omissions or defects.  
We kindly ask for your understanding.