

SIMONSWERK VARIANT® VN

VN 8948/160 U

as retrofit hinge for unrebated heavy-duty doors with steel frames

hinge

Technical details

load capacity	160,0 kg
knuckle length	160,0 mm
knuckle diameter	22,5 mm
material thickness	3,5 mm
cutter diameter	24,0 mm
screws	5,0 x 50,0 mm
pin diameter	10,0 mm

descriptive text

SIMONSWERK VARIANT heavy duty hinge VN 8948/160 U for unrebated doors with steel frames with SIMONSWERK VARIANT receiver V 8600 or V 8610 and M 10 blind rivet nuts. Load capacity 160 kg, knuckle length 160 mm, knuckle diameter 22,5 mm, right hand and left hand applicable. Internal torsion-proof screw pin, concealed, maintenance-free, generously dimensioned axial-radial slide bearings. Finish...

Note

The load capacity mentioned above refers to the use of 2 hinges per door leaf (1 x 2 m).

Also available with security pin (MSTS).

A reinforcing dowel 12x50 mm per hinge is recommended when the door is subject to heavy usage.

Please consider DIN reference.

Product features

- for unrebated heavy-duty doors
- for steel frame
- for VARIANT VS receivers or blind rivet nut
- internal torsion-proof screw pin
- concealed, maintenance -free axial-radial slide bearings

Functional areas

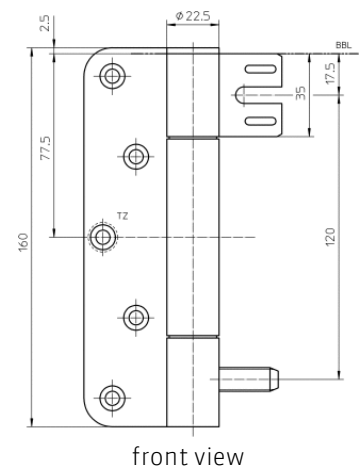
fire resistance, smoke resistance

Quality marks



Combination

accessories	blind rivet nut M 10
receiver	V 8600



SIMONSWERK

VARIANT® VN

VN 8948/160 U

as retrofit hinge for unrebated heavy-duty doors with steel frames

hinge

Combination

V 8610

V 8618

installation tools

universal milling frame

drilling jig VARIANT VN
8900/160 U

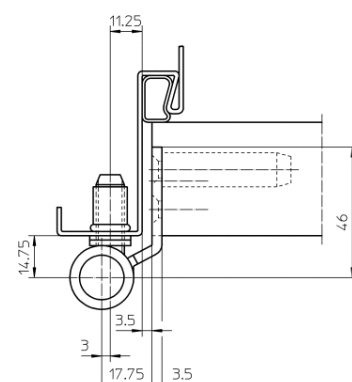
template 5 250353 5

Items (DIN reference: DIN left hand)

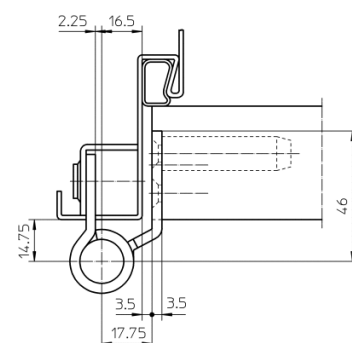
finish(es)	satin brushed stainless steel 040
packing unit	pack of 2
item number	5 050655 2 04002

Items (DIN reference: DIN right hand)

finish(es)	satin brushed stainless steel 040
packing unit	pack of 2
item number	5 050655 1 04002



with blind rivet nut



with V 86..