

SIMONSWERK VARIANT® VN

VN 1939/160 FD

for rebated soundproof doors with acoustic seal with block frames

hinge

Technical details

load capacity	160,0 kg
knuckle length	160,0 mm
knuckle diameter	22,5 mm
material thickness	3,5 mm
cutter diameter	24,0 mm
screws	5,0 x 50,0 mm
pin diameter	10,0 mm

descriptive text

SIMONSWERK VARIANT heavy duty hinge VN 1939/160 FD with groove for continuous acoustic seal for rebated soundproof doors with block frames. CE-certified, load capacity 160 kg, knuckle length 160 mm, knuckle diameter 22,5 mm, right hand and left hand applicable. Internal torsion-proof screw pin, concealed, maintenance-free, generously dimensioned axial-radial slide bearings. Finish...

Note

The load capacity mentioned above refers to the use of 2 hinges per door leaf (1 x 2 m).

Also available with security pin (MSTS).

A reinforcing dowel 12x50 mm per hinge leaf is recommended when the door is subject to heavy usage.

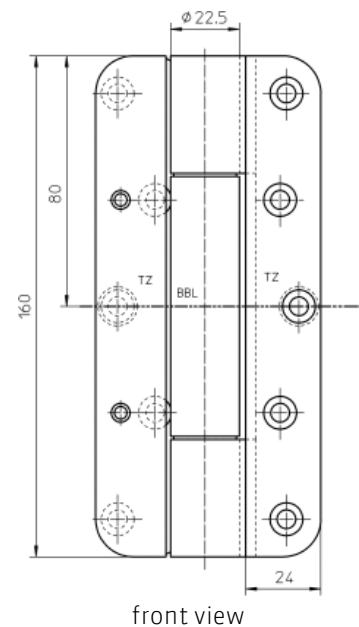
The hinge system can also be used on blind frames.

Product features

- for rebated soundproof doors
- for block frame
- internal torsion-proof screw pin
- concealed, maintenance-free axial-radial slide bearings
- with groove for continuous acoustic seal

Functional areas

fire resistance, smoke resistance und soundproof



Quality marks



installation tools

universal milling frame

template 5 250572 5

door

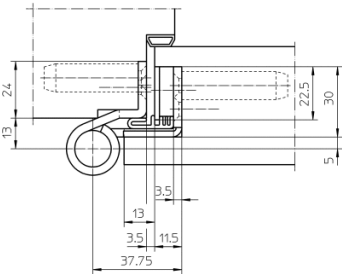
SIMONSWERK
VARIANT® VN

VN 1939/160 FD

for rebated soundproof doors with acoustic seal with block frames

hinge	
installation tools	
template 5 250559 6	frame

Items (DIN reference: DIN right and left hand)	
finish(es)	satin nickelled/F2 018
packing unit	pack of 2
item number	5 050505 0 01802
finish(es)	satin brushed stainless steel 040
packing unit	pack of 2
item number	5 050505 0 04002



block frame

While every due care has been taken, we cannot be held responsible for errors, omissions or defects.
We kindly ask for your understanding.