

# SIMONSWERK

## VARIANT® VN

### VN 3848/160

for unrebated heavy-duty doors with block frames

#### hinge

#### Technical details

|                    |               |
|--------------------|---------------|
| load capacity      | 120,0 kg      |
| knuckle length     | 160,0 mm      |
| knuckle diameter   | 22,5 mm       |
| material thickness | 3,5 mm        |
| cutter diameter    | 24,0 mm       |
| screws             | 5,0 x 50,0 mm |
| pin diameter       | 10,0 mm       |

#### descriptive text

SIMONSWERK VARIANT heavy duty hinge VN 3848/160 for unrebated doors with block frames. CE-certified, load capacity 120 kg, knuckle length 160 mm, knuckle diameter 22,5 mm, right hand and left hand applicable. Internal torsion-proof screw pin, concealed, maintenance-free, generously dimensioned axial-radial slide bearings. Finish...

#### Note

The load capacity mentioned above refers to the use of 2 hinges per door leaf (1 x 2 m).

Also available with security pin (MSTS).

A reinforcing dowel 12x50 mm per hinge is recommended when the door is subject to heavy usage.

The hinge system can also be used on blind frames.

#### Product features

- for unrebated heavy-duty doors
- for block frame
- internal torsion-proof screw pin
- concealed, maintenance-free axial-radial slide bearings

#### Functional areas

fire resistance, smoke resistance

#### Quality marks

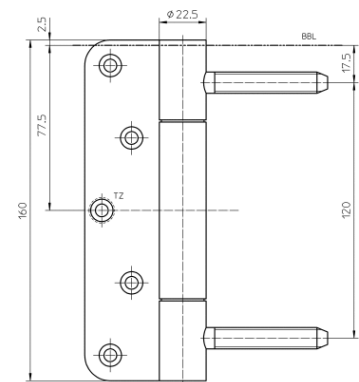


#### installation tools

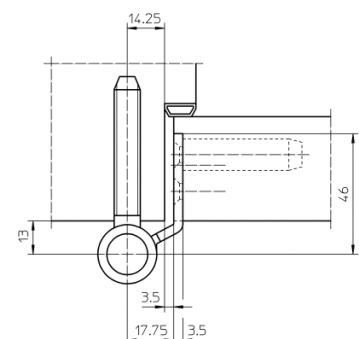
universal milling frame

plug-on drilling

jig VARIANT VN 3800/160



front view



block frame

**SIMONSWERK**  
VARIANT® VN

**VN 3848/160**  
for unrebated heavy-duty doors with block frames

|                         |  |
|-------------------------|--|
| hinge                   |  |
| installation tools      |  |
| serial drilling         |  |
| jig VARIANT VN 3800/160 |  |
| template 5 250353 5     |  |

|  |                                   |
|--|-----------------------------------|
| Items (DIN reference: DIN right and left hand) |                                   |
| finish(es)                                     | satin brushed stainless steel 040 |
| packing unit                                   | pack of 2                         |
| item number                                    | 5 050561 0 04002                  |

While every due care has been taken, we cannot be held responsible for errors, omissions or defects.  
We kindly ask for your understanding.