

SIMONSWERK VARIANT® VN

VN 3949/100

for unrebated heavy-duty doors with block frames

hinge

Technical details

load capacity	100,0 kg
knuckle length	95,0 mm
knuckle diameter	20,0 mm
material thickness	3,5 mm
cutter diameter	24,0 mm
screws	5,0 x 50,0 mm
pin diameter	10,0 mm

descriptive text

SIMONSWERK VARIANT heavy duty hinge VN 3948/160 for unrebated doors with block frames with SIMONSWERK VARIANT clamping block V 3604 or SIMONSWERK VARIANT clamp V 3605. CE-certified, load capacity 100 kg, knuckle length 95 mm, knuckle diameter 20 mm, right hand and left hand applicable. Internal torsion-proof screw pin, concealed, maintenance-free, generously dimensioned axial-radial slide bearings. Finish...

Note

The load capacity mentioned above refers to the use of 2 hinges per door leaf (1 x 2 m).

Also available with security pin (MSTS).

The hinge system can also be used on blind frames.

Product features

- for unrebated heavy-duty doors
- for block frame
- for VARIANT V receivers
- internal torsion-proof screw pin
- concealed, maintenance-free axial-radial slide bearings

Functional areas

fire resistance, smoke resistance

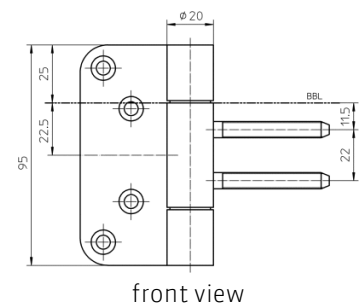
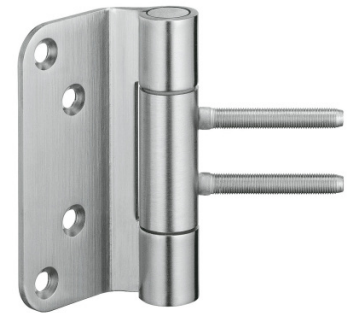
Quality marks



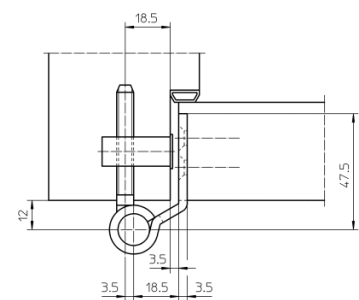
Combination

receiver

V series 3604
V 3605



front view



block frame

SIMONSWERK
VARIANT® VN

VN 3949/100

for unrebated heavy-duty doors with block frames

hinge	
-------	--

installation tools

universal milling frame
template 5 250565 5

Items (DIN reference: DIN right and left hand)

finish(es)	satin nickelled/F2 018
packing unit	pack of 10
item number	5 030571 0 01806
finish(es)	satin brushed stainless steel 040
packing unit	pack of 10
item number	5 030571 0 04006

While every due care has been taken, we cannot be held responsible for errors, omissions or defects.
We kindly ask for your understanding.