

SIMONSWERK

VARIANT® VN

MULTI 2D VN 5045

for flush aluminium and steel doors

hinge

Technical details

load capacity	100,0 kg
knuckle length	100,0 mm
knuckle diameter	20,0 mm

descriptive text

SIMONSWERK MULTI 2D VN 5045 door hinge with angular bolting for high pull-out strength with flush aluminium and steel doors. Load capacity 100 kg, knuckle length 100 mm, knuckle diameter 20 mm, right hand and left hand applicable. Infinitely variable two-dimensional adjustment: Side +/- 3,0 mm, height +/- 4,0 mm. Finish...

Note

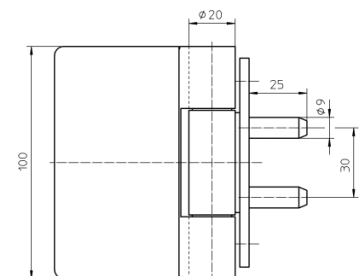
The load capacity mentioned above refers to the use of 2 hinges per door leaf (1 x 2 m).

Also available with security pin (MSTS).

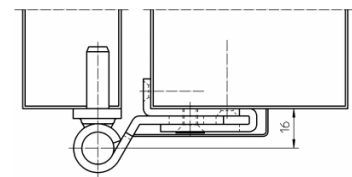
Product features

- for rebated flush aluminium and steel doors
- continuously 2D adjustable (side +/- 3,0 mm, height +/- 4,0 mm)
- with angular bolting for high pull-out strength

Quality marks



front view



steel door