

SIMONSWERK

VARIANT® VN

MULTI 2D VN 5046

for flush aluminium and steel doors

hinge

Technical details

load capacity	100,0 kg
knuckle length	100,0 mm
knuckle diameter	20,0 mm

descriptive text

SIMONSWERK MULTI 2D VN 5046 door hinge for flush aluminium and steel doors. CE-certified, load capacity 100 kg, knuckle length 100 mm, knuckle diameter 20 mm, right hand and left hand applicable. Two-dimensionally, continuously adjustable: Side +/- 3,0 mm, height +/- 4,0 mm. Finish...

Note

The load capacity mentioned above refers to the use of 2 hinges per door leaf (1 x 2 m).

Also available with security pin (MSTS).

Product features

- for rebated flush aluminium and steel doors
- continuously 2D adjustable (side +/- 3,0 mm, height +/- 4,0 mm)

Quality marks

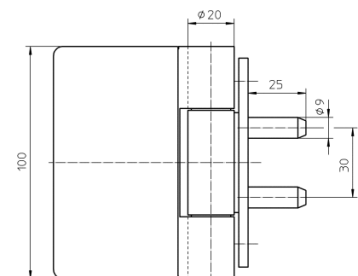


installation tools

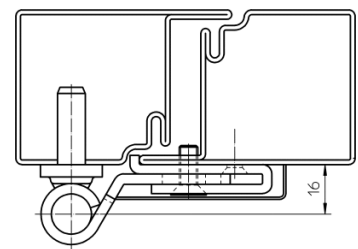
drilling jig MULTI 2D VN 5046

Items (DIN reference: DIN right and left hand)

finish(es)	galvanised 010
packing unit	pack of 20
item number	5 030818 0 01007
finish(es)	satin brushed stainless steel 040
packing unit	pack of 20
item number	5 030818 0 04007
finish(es)	traffic white - RAL 9016 070
packing unit	pack of 20
item number	5 030818 0 07007



front view



aluminium door