

SIMONSWERK

VARIANT® VN

MULTI 3D VN 3030

for rebated PVCu and timber doors

hinge

Technical details

load capacity	100,0 kg
knuckle length	100,0 mm
knuckle diameter	20,0 mm

descriptive text

SIMONSWERK MULTI 3D VN 3030 door hinge with angular bolting for high pull-out strength for rebated PVCu and timber doors with overlap thickness of 13,0-18,0 mm. Load capacity 100 kg, knuckle length 100 mm, knuckle diameter 20 mm, right hand and left hand applicable. Three-dimensionally, continuously adjustable: Side +/- 3,0 mm, height +/- 4,0 mm, compression +/- 3,0 mm. Finish...

Note

The load capacity mentioned above refers to the use of 2 hinges per door leaf (1 x 2 m).

Also available with security pin (MSTS).

Product features

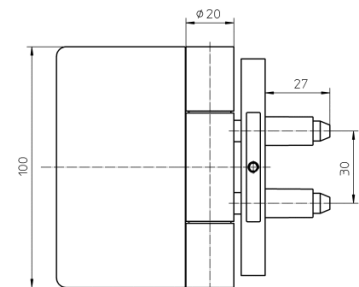
- for rebated doors
- for overlap thicknesses 13-18 mm
- continuously 3D adjustable (side +/- 3,0 mm, height +/- 4,0 mm, compression +/- 3,0 mm)
- with angular bolting for high pull-out strength

installation tools

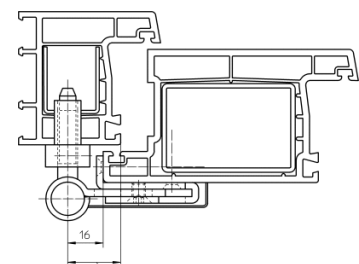
drilling jig MULTI 3D VN 3030

Items (DIN reference: DIN right and left hand)

finish(es)	satin nickelled 017
packing unit	pack of 2
item number	5 030801 0 01702
finish(es)	satin chromed/F1 028
packing unit	pack of 2
item number	5 030801 0 02802
finish(es)	satin brushed stainless steel 040
packing unit	pack of 2
item number	5 030801 0 04002
finish(es)	traffic white - RAL 9016 070
packing unit	pack of 20
item number	5 030801 0 07007
finish(es)	brown - H 9 071
packing unit	pack of 20
item number	5 030801 0 07107



front view



PVCu entrance door