

# SIMONSWERK

## VARIANT® VN

### MULTI 3D VN 3032

for aluminium and steel doors

#### hinge

#### Technical details

load capacity	100,0 kg
knuckle length	100,0 mm
knuckle diameter	20,0 mm

#### descriptive text

SIMONSWERK MULTI 3D VN 3032 door hinge for rebated aluminium and steel doors with overlap thickness of 5-8 mm. Load capacity 100 kg, knuckle length 100 mm, knuckle diameter 20 mm, right hand and left hand applicable. Three-dimensionally, continuously adjustable: Side +/- 3,0 mm, height +/- 4,0 mm, compression +/- 3,0 mm. Finish...

#### Note

The load capacity mentioned above refers to the use of 2 hinges per door leaf (1 x 2 m).

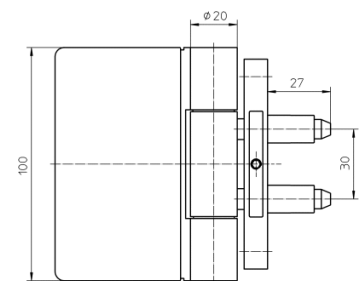
Also available with security pin (MSTS).

#### Product features

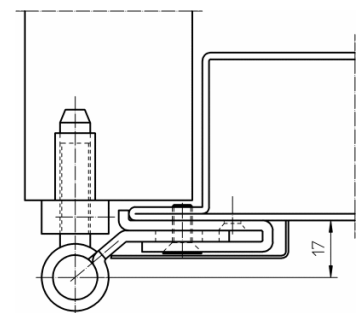
- for rebated aluminium and steel doors
- for overlap thicknesses 5-8 mm
- continuously 3D adjustable (side +/- 3,0 mm, height +/- 4,0 mm, compression +/- 3,0 mm)

#### Items (DIN reference: DIN right and left hand)

finish(es)	satin nickelled 017
packing unit	pack of 2
item number	5 030807 0 01702
finish(es)	traffic white - RAL 9016 070
packing unit	pack of 2
item number	5 030807 0 07002
finish(es)	brown - H 9 071
packing unit	pack of 2
item number	5 030807 0 07102



front view



steel door