

SIMONSWERK

VARIANT® VN

MULTI 3D VN 3041

for flush aluminium and steel doors

hinge

Technical details

load capacity	100,0 kg
knuckle length	100,0 mm
knuckle diameter	20,0 mm

descriptive text

SIMONSWERK MULTI 3D VN 3041 door hinge for flush aluminium and steel doors. Load capacity 100 kg, knuckle length 100 mm, knuckle diameter 20 mm, right hand and left hand applicable. Three-dimensionally, continuously adjustable: Side +/- 3,0 mm, height +/- 4,0 mm, compression +/- 3,0 mm. Finish...

Note

The load capacity mentioned above refers to the use of 2 hinges per door leaf (1 x 2 m).

Also available with security pin (MSTS).

Product features

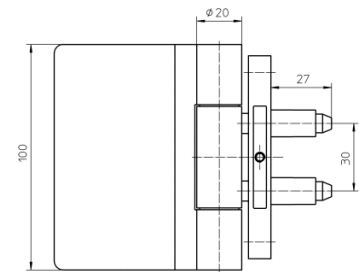
- for rebated flush aluminium and steel doors
- continuously 3D adjustable (side +/- 3,0 mm, height +/- 4,0 mm, compression +/- 3,0 mm)

Quality marks

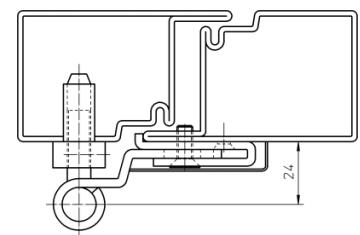


installation tools

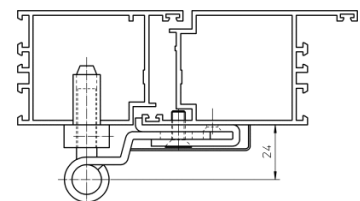
drilling jig MULTI 3D VN 3041



front view



steel door



aluminium door

SIMONSWERK
VARIANT® VN

MULTI 3D VN 3041

for flush aluminium and steel doors

hinge

Items (DIN reference: DIN right and left hand)

finish(es)	galvanised 010
packing unit	pack of 2
item number	5 030805 0 01002
finish(es)	satin nickelled 017
packing unit	pack of 2
item number	5 030805 0 01702
finish(es)	satin brushed stainless steel 040
packing unit	pack of 2
item number	5 030805 0 04002
finish(es)	traffic white - RAL 9016 070
packing unit	pack of 2
item number	5 030805 0 07002
finish(es)	brown - H 9 071
packing unit	pack of 2
item number	5 030805 0 07102

While every due care has been taken, we cannot be held responsible for errors, omissions or defects.
We kindly ask for your understanding.