

SIMONSWERK

VARIANT® VX

VX 7729/160-4 Bronze

for unrebated heavy-duty doors

hinge

Technical details

load capacity	160,0 kg
knuckle length	160,0 mm
knuckle diameter	22,5 mm
material thickness	4,0 mm
cutter diameter	24,0 mm
screws	6,0x50,0 mm

descriptive text

SIMONSWERK VARIANT heavy duty hinge VX 7729/160-4 Bronze made from solid bronze for unrebated doors with timber, steel or aluminium frames with three-dimensionally adjustable SIMONSWERK receivers VARIANT VX. CE-certified, load capacity 160 kg, knuckle length 160 mm, knuckle diameter 22,5 mm, material thickness 4 mm, right hand and left hand applicable. Internal torsion-proof screw pin, concealed, maintenance-free, generously dimensioned axial-radial slide bearings. Finish...

Note

The load capacity mentioned above refers to the use of 2 hinges per door leaf (1 x 2 m).
Delivery includes screws matching in colour of 6,0x50,0 mm.

Hinge systems made from Bronze material get dark by using and by environmental impact.

The varying shades give no reason for quality defects, but point to a natural change process of the bronze material.

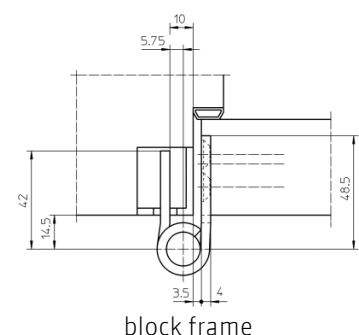
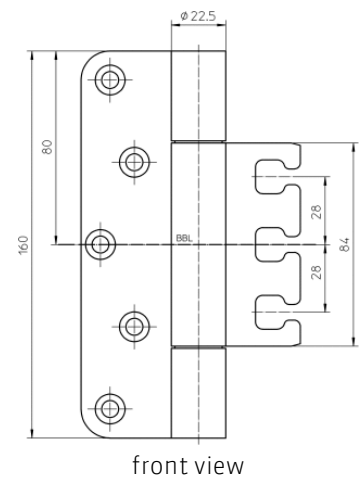
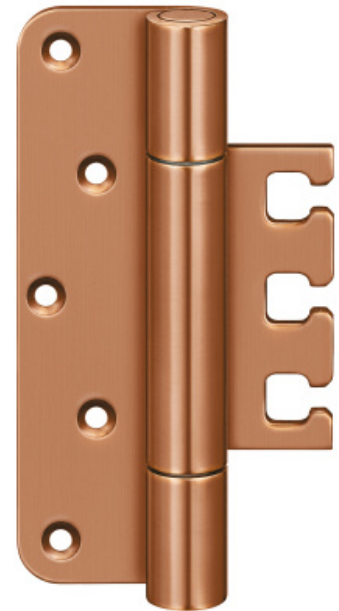
Product features

- for unrebated heavy-duty doors
- for timber, steel or aluminium frames
- for 3D adjustable VARIANT VX receivers
- internal torsion-proof screw pin
- concealed, maintenance-free axial-radial slide bearings
- material Bronze

Functional areas

fire resistance, smoke resistance

Quality marks



VX 7729/160-4 Bronze
for unrebated heavy-duty doors

hinge	
-------	--

Combination

receiver	VX 2501 3D
	VX 2502 3D
	VX 2505 3D
	VX 7611 3D
	VX 7612 3D
	VX 7521 3D

installation tools

universal milling frame
template 5 250353 5

Items (DIN reference: DIN right and left hand)

finishes(es)	Bronze, polished 162
packing unit	pack of 2
item number	5 051935 0 16202
finishes(es)	Bronze, bright patinated 163
packing unit	pack of 2
item number	5 051935 0 16302
finishes(es)	Bronze, dark 167
packing unit	pack of 2
item number	5 051935 0 16702