

VX 7729/160 Planum

for unrebated heavy-duty doors with filigree knuckle

hinge

Technical details

load capacity	160,0 kg
knuckle length	160,0 mm
knuckle diameter	15,0 mm
material thickness	3,0 mm
cutter diameter	24,0 mm
screws	5,0x50,0 mm

descriptive text

SIMONSWERK VARIANT heavy duty hinge VX 7729/160 Planum with reduced, filigree knuckle for unrebated doors with timber, steel or aluminium frames with three-dimensionally adjustable SIMONSWERK receivers VARIANT VX. CE-certified, load capacity 160 kg, knuckle length 160 mm, knuckle diameter 15 mm, right hand and left hand applicable. Internal fixed hinge pin, concealed, maintenance-free axial-radial slide bearings. Finish...

Note

The load capacity mentioned above refers to the use of 2 hinges per door leaf (1 x 2 m).

A reinforcing dowel 12x50 mm per hinge is recommended when the door is subject to heavy usage.

Adapted for the application on doors within the high-class sector the slim, diameter-reduced hinge knuckle is ideal for slimline, recessed frame facings.

Product features

- for unrebated heavy-duty doors
- for timber, steel or aluminium frames
- for 3D adjustable VARIANT VX receivers
- internal pin
- concealed, maintenance -free axial-radial slide bearings
- with reduced, filigree knuckle
- integral security pin

Functional areas

fire resistance, smoke resistance

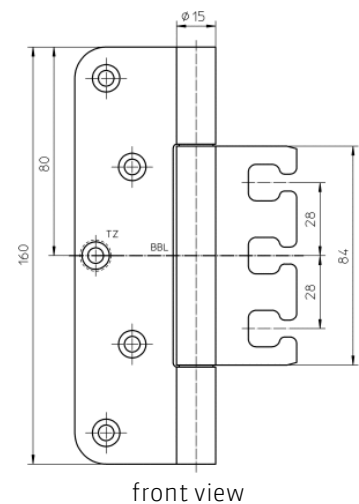
Quality marks



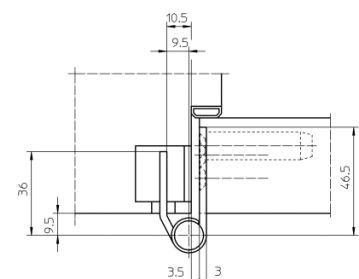
Combination

receiver

VX 2501 3D



front view



block frame

VX 7729/160 Planum
for unrebated heavy-duty doors with filigree knuckle

hinge	
Combination	VX 7501 3D VX 2502 3D VX 7502 3D VX 7506 3D VX 2505 3D VX 7505 3D VX 7611 3D VX 7612 3D VX 7521 3D

installation tools
universal milling frame
template 5 250353 5

Items (DIN reference: DIN right and left hand)	
finishes(es)	satin chromed/F1 037
packing unit	pack of 2
item number	5 051556 0 03702
finishes(es)	satin brushed stainless steel 040
packing unit	pack of 2
item number	5 051556 0 04002