

SIMONSWERK

VARIANT® VX

VX 7859/160

for rebated flush heavy-duty doors

hinge

Technical details

load capacity	120,0 kg
knuckle length	160,0 mm
knuckle diameter	22,5 mm
material thickness	3,5 mm
cutter diameter	24,0 mm
screws	5,0x50,0 mm
screws for overlap	4,5x30,0 mm

descriptive text

SIMONSWERK VARIANT heavy duty hinge VX 7859/160 for rebated flush doors with timber, steel and aluminium frames with three-dimensionally adjustable SIMONSWERK receivers VARIANT VX. CE-certified, load capacity 120 kg, knuckle length 160 mm, knuckle diameter 22,5 mm, right hand and left hand applicable. Internal torsion-proof screw pin, concealed, maintenance-free, generously dimensioned axial-radial slide bearings. Finish...

Note

The load capacity mentioned above refers to the use of 2 hinges per door leaf (1 x 2 m).

A reinforcing dowel 12x50 mm per hinge is recommended when the door is subject to heavy usage.

Also available with security pin (MST).

Product features

- for rebated flush heavy-duty doors
- for timber, steel or aluminium frames
- for 3D adjustable VARIANT VX receivers
- internal torsion-proof screw pin
- concealed, maintenance-free axial-radial slide bearings

Functional areas

fire resistance, smoke resistance

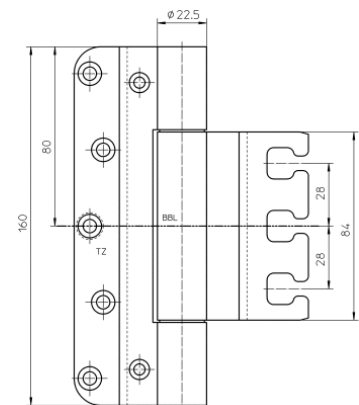
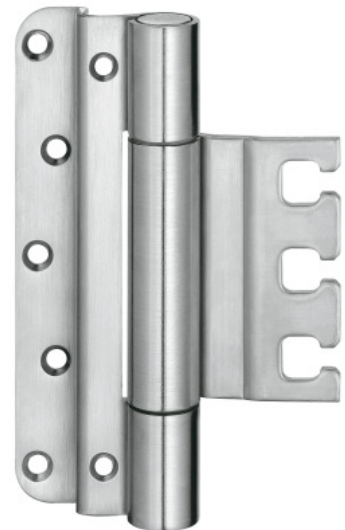
Quality marks



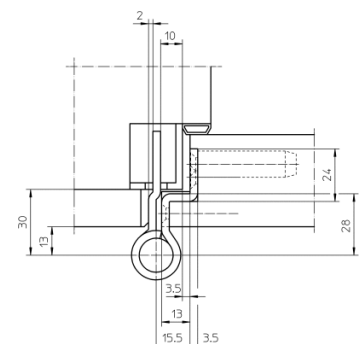
Combination

receiver

VX 2501 3D
VX 7501 3D
VX 2502 3D



front view



block frame

VX 7859/160
for rebated flush heavy-duty doors

hinge	
Combination	VX 7502 3D VX 7506 3D VX 2505 3D VX 7505 3D VX 7611 3D VX 7612 3D VX 7521 3D

installation tools	
universal milling frame	
template 5 250577 6	

Items (DIN reference: DIN right and left hand)	
finishes(es)	satin nickelled/F2 018
packing unit	pack of 2
item number	5 050858 0 01802
finishes(es)	polished brassed 030
packing unit	pack of 2
item number	5 050858 0 03002
finishes(es)	satin brushed stainless steel 040
packing unit	pack of 2
item number	5 050858 0 04002
finishes(es)	powder-coated 079
packing unit	EUR pallet
item number	5 050858 0 07975