

VX 7859/160 FD

for rebated flush soundproof doors with acoustic seal

hinge

Technical details

load capacity	120,0 kg
knuckle length	160,0 mm
knuckle diameter	22,5 mm
material thickness	3,5 mm
cutter diameter	24,0 mm
screws	5,0x50,0 mm
screws for cover plate	3,0x25,0 mm
screws for overlap	4,5x30,0 mm

descriptive text

SIMONSWERK VARIANT heavy duty hinge VX 7859/160 FD with groove for continuous acoustic seal for rebated flush soundproof doors with timber, steel or aluminium frames with three-dimensionally adjustable SIMONSWERK receivers VARIANT VX. CE-certified, load capacity 120 kg, knuckle length 160 mm, knuckle diameter 22,5 mm, right hand and left hand applicable. Internal torsion-proof screw pin, concealed, maintenance-free, generously dimensioned axial-radial slide bearings. Finish...

Note

The load capacity mentioned above refers to the use of 2 hinges per door leaf (1 x 2 m).

A reinforcing dowel 12x50 mm per hinge is recommended when the door is subject to heavy usage.

Also available with security pin (MSTS).

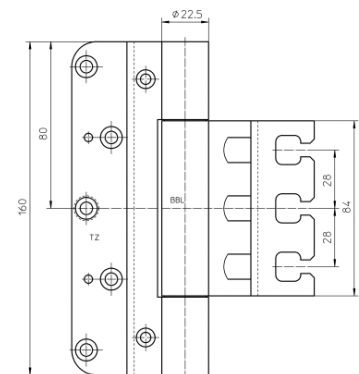
Product features

- for rebated flush soundproof doors
- for timber, steel or aluminium frames
- for 3D adjustable VARIANT VX receivers
- internal torsion-proof screw pin
- concealed, maintenance-free axial-radial slide bearings
- with groove for continuous acoustic seal

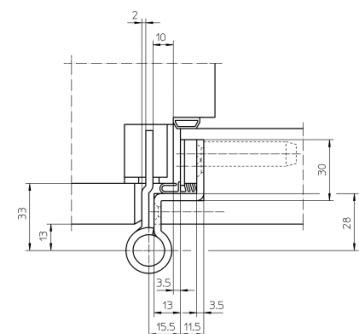
Functional areas

fire resistance, smoke resistance und soundproof

Quality marks



front view



block frame

VX 7859/160 FD

for rebated flush soundproof doors with acoustic seal

hinge

Combination

receiver	VX 2501 3D
	VX 7501 3D
	VX 2502 3D
	VX 7502 3D
	VX 7506 3D
	VX 2505 3D
	VX 7505 3D
	VX 7611 3D
	VX 7612 3D
	VX 7521 3D

installation tools

universal milling frame
template 5 250666 6

Items (DIN reference: DIN right and left hand)

finishes(es)	satin brushed stainless steel 040
packing unit	pack of 2
item number	5 050870 0 04002

While every due care has been taken, we cannot be held responsible for errors, omissions or defects.
We kindly ask for your understanding.