

# SIMONSWERK VARIANT® VG

## VXG 7780/120

for glass doors with unrebated timber, steel or aluminium frames

### hinge

#### Technical details

|                    |          |
|--------------------|----------|
| load capacity      | 80,0 kg  |
| knuckle length     | 120,0 mm |
| knuckle diameter   | 20,0 mm  |
| material thickness | 3,5 mm   |

#### descriptive text

SIMONSWERK VARIANT heavy duty hinge VXG 7780/120 for glass doors with unrebated timber, steel or aluminium frames for three-dimensionally adjustable SIMONSWERK receivers VARIANT VX. Designed for glass doors with vertical standard drill pattern, for glass thicknesses of 8 and 10 mm. Load capacity 80 kg, knuckle length 120 mm, knuckle diameter 20 mm, right hand and left hand applicable. Internal torsion-proof pin, concealed, maintenance-free, generously dimensioned axial-radial slide bearings. Finish...

#### Note

The load capacity mentioned above refers to the use of 2 hinges per door leaf (1 x 2 m).

#### Product features

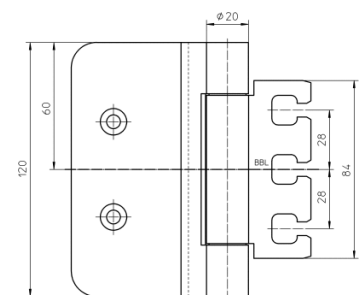
- for unrebated timber, steel, aluminium frames
- for 3D adjustable VARIANT VX receivers
- intended for glass doors with vertical standard hole pattern
- for glass thicknesses of 8 and 10 mm
- internal torsion-proof pin
- concealed, maintenance-free axial-radial slide bearings

#### Combination

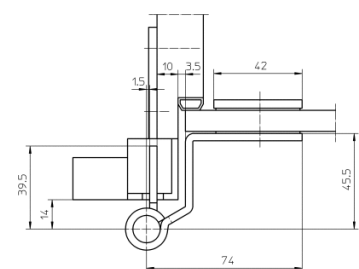
|          |  |
|----------|--|
| receiver | VX 2501 3D<br>VX 7501 3D<br>VX 2502 3D<br>VX 7502 3D<br>VX 7506 3D<br>VX 2505 3D<br>VX 7505 3D<br>VX 7611 3D<br>VX 7612 3D<br>VX 7521 3D |
|----------|--|

**Items** (DIN reference: DIN right and left hand)

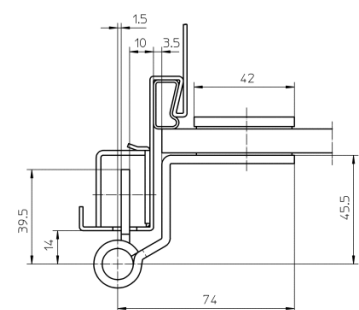
|                     |                                   |
|---------------------|-----------------------------------|
| <b>finish(es)</b>   | satin brushed stainless steel 040 |
| <b>packing unit</b> | pack of 2                         |
| <b>item number</b>  | 5 320595 0 04002                  |



front view



casing frame



steel frame