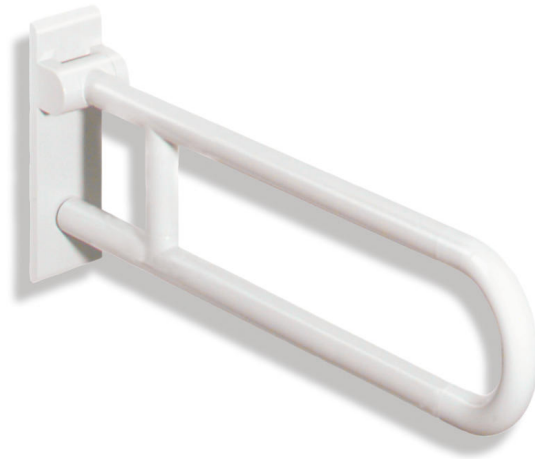


## Product data sheet

### HEWI active+ Hinged support rail, rotating 801.50D110

# HEWI



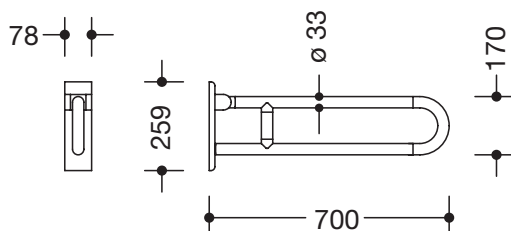
#### HEWI active+ Hinged support rail, rotating 801.50D110

- two parallel rails running one above the other joined by a connecting bend
- for holding on to and providing support
- weight capacity 100 kg
- with continuous, corrosion resistant steel core and wall plate made of polyamide with integrated steel core
- can be folded upwards and, folded downwards with braking mechanism, in raised position can be turned to left or right towards the wall
- for wall mounting with wall-specific HEWI fixing material
- concealed fixing
- 700 mm projection, 259 mm high and 78 mm deep, 33 mm rail diameter
- rails made of high-quality polyamide in HEWI colour 98 (signal white), with active antimicrobial microsilver
- toilet roll holder 801.50D010, 801.50D011 and WC flushing mechanism (radio-controlled) 801.50D060 and floor supports 950.50.021XA and 950.50.023XA for retrofitting
- CE marking according to Directive 93/42 / EEC
- fulfils the ÖNORM B1600/1601 and SIA 500 requirements



CE HEWI *active*<sup>+</sup>

#### Dimensions in mm



Colour

98

Technical information subject to alteration, 16th August 2019

HEWI Heinrich Wilke GmbH  
Postfach 1260  
D-34442 Bad Arolsen

Telefon: +49 5691 82-366  
Telefax: +49 5691 82-99366  
international@hewi.com  
www.hewi.com

HEWI (UK) Limited  
Holm Oak Barn, Beluncle Halt  
Stoke Road  
Hoo Kent ME3 9NT

Phone +44 1634 258 200  
Fax +44 1634 250 099  
info@hewi.co.uk  
www.hewi.com